



# Seam Divas Sewing Lounge Bring-to-Class List

Go to the head of the class by being prepared. Fun certain to ensue!

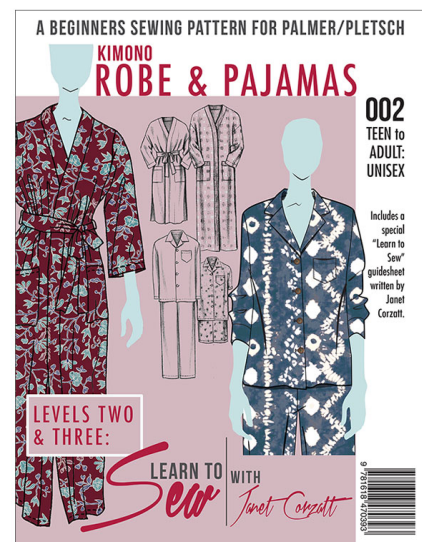
## Learn to Sew – Level 2 – Pajamas or Camp Shirt

**Prewash all fabric  
Cotton shrinks!**

### SUPPLIES FOR THE PAJAMAS:

**\* Choose 100% cotton in a quilter's weight or a 100% cotton flannel.**

- For yardages, carefully read the back of the pattern envelope (or see page attached) to determine how much you need. Check for size or ask me for help to measure correctly! Be sure to look at the options for length and style (shorts, full-length, sleeve length), too. You choose which design you want to make. Check the finished garment measurements if you aren't sure about size. This is a unisex pattern and they run BIG!
- **100% polyester thread.** Get a good brand! (Gutermann, Mettler, Dual Duty XP)
- **Buttons** (5) 5/8" or 3/4" buttons for PJ top
- **3/4" knit elastic** for the PJ bottom waist-buy enough for your waist measurement.



The pattern is supplied for you. Additional patterns are available for purchase or you can find them at [palmerpletsch.com](http://palmerpletsch.com)

### SEWING SUPPLIES:

- Sharp sewing scissors. 8-9" bent handle shears are best.
- 1 1/3" glass head extra fine (.5mm) straight pins. They will say .5mm in the fine print. Pins will be available for purchase here if you prefer.
- Magnetic pin cushion (optional but highly recommended for safety and time-saving).

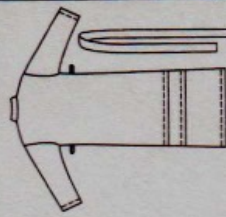
*\*If you are a more experienced sewer and would like to use a less stable fabric like rayon or a lightweight linen, that is fine. It is more challenging to work with these fabrics, so I don't recommend them for the beginner, but the drape is dreamy. Talk to me about it if you can't decide.*



# 002 Classic Kimono Robe & Pajamas

**TEENS', MISSES', AND MEN'S ROBE:** 5 sizes. Robe has tie belt, front band and pockets.  
**TEENS', MISSES', AND MEN'S TOP, PULL-ON PANTS OR SHORTS:** 3 sizes.  
 Loose fitting top has collar, button front and patch pocket; pull-on pants have elastic waist.

**SUGGESTED FABRICS:** Robe- Cotton and cotton blends, cotton flannel, seersucker, oxford cloth, chambray, light weight Polar Fleece®, velour. Pajamas- Cotton and cotton blends, cotton flannel, chambray, broadcloth.



**\*\*\*With or Without Nap:**  
 Use With Nap Yardages and layouts for pile or one-way design fabrics. Additional Fabric may be needed to match stripes or plaids.

**NOTIONS:** Thread. Robe-Pocket Interfacing 1/8 yd. (11.5cm)  
 Pajama Top-Four 3/4" (19mm) Buttons; Interfacing 1 yd. (.90m)  
 Pajama Pants or Shorts-1 1/2 yds. (1.30m) of 3/4" (2cm) Wide Elastic;

**FINISHED GARMENT MEASUREMENTS:** Inch (cm)

ROBE Sizes	XS	S	M	L	XL
Measurement at bust/chestline	42 1/2 (108)	46 (117)	49 1/2 (126)	53 1/2 (136)	57 1/2 (146)
Measurement at hipline	44 1/2 (113)	48 (122)	51 1/2 (131)	55 1/2 (141)	59 1/2 (151)
Back length from normal neckline	Misses' Long 55 1/4 (142)	56 1/4 (143)	56 3/4 (144)	57 1/4 (145)	57 3/4 (147)
Men's Long	58 3/4 (149)	59 1/4 (150)	59 3/4 (152)	60 1/4 (153)	60 3/4 (154)
Misses' Med.	43 3/4 (111)	44 1/4 (113)	44 3/4 (114)	45 1/4 (116)	45 3/4 (116)
Men's Med.	46 5/8 (119)	47 1/4 (120)	47 3/4 (121)	48 1/4 (123)	48 3/4 (124)
Misses' Short	37 1/4 (96)	38 1/4 (97)	38 3/4 (98)	39 1/4 (100)	39 3/4 (101)
Men's Short	40 3/4 (104)	41 1/4 (105)	41 3/4 (106)	42 1/4 (107)	42 3/4 (108)

**FINISHED GARMENT MEASUREMENTS:**

Inches (cm)

**PAJAMAS**

Sizes	S	M	L
Measurement at bust/chestline	48 1/2 (123)	52 1/2 (133)	56 1/2 (144)
Measurement at hipline	47 1/2 (121)	51 1/2 (131)	55 1/2 (141)
Pants/Shorts	45 (114)	49 (124)	53 (135)
Back length from normal neckline	Top 29 1/2 (75)	30 (76)	30 1/2 (77)
Side length from natural waistline	Pants 42 1/2 (108)	43 (109)	43 1/2 (111)
Width, each leg	Pants 18 (46)	19 (48)	20 (51)

Sizes:	Robe, Pajamas			Inches (cm)		
	XS/Small	S/Small	M/Medium	L/Large	XL/X-Large	
Bust/Chest:	29 1/2-30 1/2"	31 1/2-32 1/2"	34-36"	38-40"	42-44"	
Hips:	75-78cm	80-83cm	87-92cm	97-102cm	107-112cm	
	31 1/2-32 1/2"	33 1/2-34 1/2"	36-38"	40-42"	44-46"	
	80-83cm	85-88cm	92-97cm	102-107cm	112-117cm	
<b>ROBE YARDAGE: Long</b>	Yards (m)			Yards (m)		
45" ***	4 1/2 (4.20)	4 3/8 (4.20)	4 5/8 (4.20)	4 1/4 (4.30)	4 7/8 (4.40)	
60" ***	4 1/8 (3.80)	4 1/4 (3.80)	4 1/4 (3.90)	4 1/4 (3.90)	4 1/4 (3.90)	
<b>CONTRAST BAND YARDAGE: Long</b>	Yards (m)			Yards (m)		
45 thru 60" ***	1 1/8 (1.80)	1 1/8 (1.80)	1 1/8 (1.80)	2 (1.90)	2 (1.90)	
<b>ROBE YARDAGE: Medium</b>	Yards (m)			Yards (m)		
45" ***	4 (3.70)	4 (3.70)	4 1/8 (3.80)	4 1/8 (3.80)	4 1/4 (3.90)	
60" ***	3 3/8 (3.30)	3 3/8 (3.30)	3 3/4 (3.40)	3 3/4 (3.40)	3 3/4 (3.60)	
<b>CONTRAST BAND YARDAGE: Medium</b>	Yards (m)			Yards (m)		
45 thru 60" ***	1 1/2 (1.40)	1 1/2 (1.50)	1 1/8 (1.50)	1 1/8 (1.50)	1 1/2 (1.50)	
<b>ROBE YARDAGE: Short</b>	Yards (m)			Yards (m)		
45" ***	3 1/2 (3.20)	3 1/2 (3.30)	3 3/4 (3.40)	3 3/4 (3.40)	3 3/4 (3.40)	
60" ***	3 1/8 (2.80)	3 1/4 (2.90)	3 3/8 (3.10)	3 3/8 (3.10)	3 3/8 (3.10)	
<b>CONTRAST BAND YARDAGE: Short</b>	Yards (m)			Yards (m)		
45 thru 60" ***	1 3/8 (1.30)	1 3/8 (1.30)	1 3/8 (1.30)	1 1/2 (1.40)	1 1/2 (1.40)	
<b>ROBE YARDAGE: Long</b>	Yards (m)			Yards (m)		
45" ***	4 1/4 (4.30)	4 3/4 (4.30)	4 3/4 (4.30)	4 3/4 (4.30)	5 1/8 (5.10)	
60" ***	4 1/8 (3.80)	4 1/4 (3.80)	4 1/4 (3.90)	4 1/4 (3.90)	4 1/4 (3.90)	
<b>ROBE YARDAGE: Medium</b>	Yards (m)			Yards (m)		
45" ***	4 1/8 (3.80)	4 1/8 (3.80)	4 1/8 (3.80)	4 1/8 (3.90)	4 1/4 (3.90)	
60" ***	3 3/8 (3.30)	3 3/4 (3.30)	3 3/4 (3.40)	3 3/4 (3.50)	3 3/8 (3.60)	
<b>ROBE YARDAGE: Short</b>	Yards (m)			Yards (m)		
45" ***	3 3/4 (3.40)	3 3/4 (3.40)	3 3/4 (3.40)	3 3/4 (3.40)	3 3/4 (3.40)	
60" ***	3 1/4 (2.90)	3 1/4 (3.00)	3 3/8 (3.10)	3 3/8 (3.10)	3 3/8 (3.10)	
<b>PAJAMA TOP YARDAGE: Short Sleeve</b>	Yards (m)			Yards (m)		
45" ***	2 5/8 (2.40)	2 1/4 (2.00)	2 1/4 (2.50)	2 7/8 (2.60)	2 7/8 (2.60)	
60" ***	2 1/4 (2.00)	2 1/4 (2.00)	2 1/4 (2.00)	2 1/4 (2.00)	2 1/4 (2.00)	
<b>PAJAMA TOP YARDAGE: Long Sleeve</b>	Yards (m)			Yards (m)		
45" ***	3 3/8 (3.10)	3 3/8 (3.10)	3 3/8 (3.10)	3 3/8 (3.10)	3 3/8 (3.10)	
60" ***	2 5/8 (2.40)	2 5/8 (2.40)	2 5/8 (2.40)	2 5/8 (2.40)	2 5/8 (2.40)	
<b>PAJAMA PANTS YARDAGE:</b>	Yards (m)			Yards (m)		
45" ***	2 5/8 (2.40)	2 5/8 (2.40)	2 5/8 (2.50)	2 3/4 (2.50)	2 3/4 (2.50)	
60" ***	2 1/4 (2.0)	2 3/8 (2.10)	2 3/8 (2.10)	2 3/8 (2.10)	2 3/8 (2.10)	
<b>PAJAMA SHORTS YARDAGE:</b>	Yards (m)			Yards (m)		
45" ***	1 1/4 (1.10)	1 1/4 (1.20)	1 1/8 (1.20)	1 3/8 (1.20)	1 3/8 (1.20)	
60" ***	1 (0.90)	1 (0.90)	1 (0.90)	1 1/8 (1.20)	1 1/8 (1.20)	